

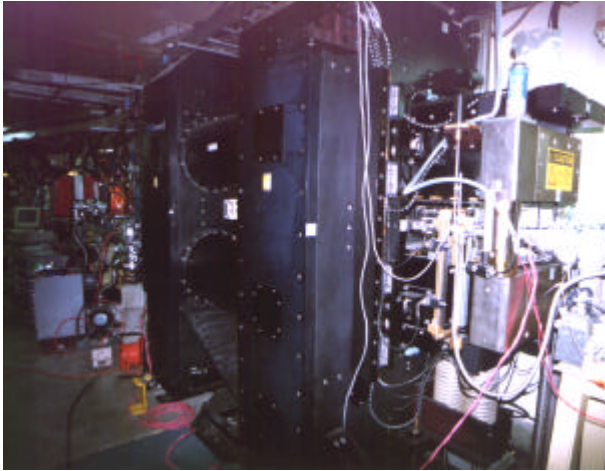
# *Insertion Devices*

## Completed

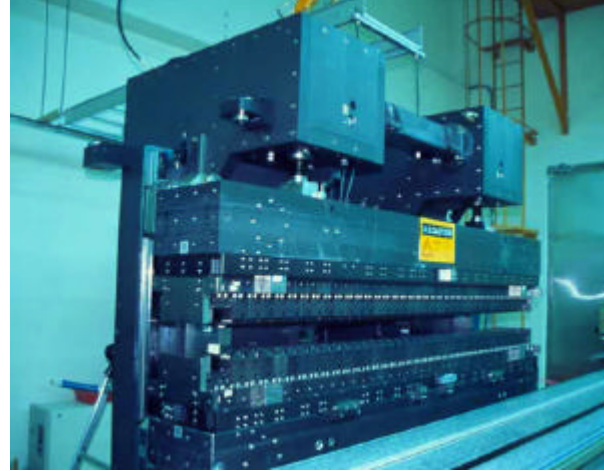
- **W20 wiggler – 3.0 m** (1994.12)
- **U10 undulator – 2.2 m** (1995.10)
- **U5 undulator – 3.9 m** (1997.3)
- **U9 undulator – 4.5 m** (1999.4)
- **EPU5.6 undulator – 3.9 m** (1999.8)
- **IVXU3.2 – 4.5 m** (2000.1, at SPring-8)

## Under Construction & Design

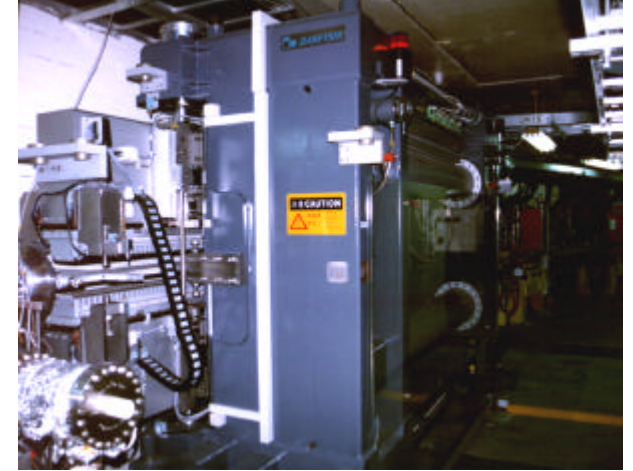
- **Superconducting wave length shifter – 6T, 3-pole**  
(2002.4)
- **Superconducting multi-pole wiggler – 3.5 T, 26-pole**  
(2003.1)
- **Superconducting multi-pole wiggler – 3 T, 10-pole**  
(2004 ~ 2005)



**W20 wiggler**



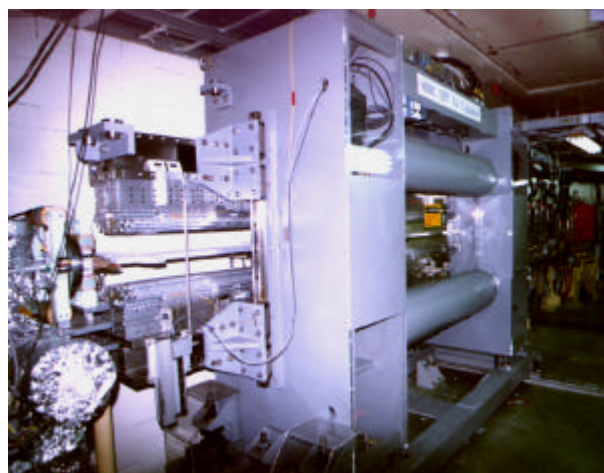
**U10 undulator**



**U5 undulator**



**U9 undulator**



**EPU5.6 undulator**



**IVXU3.2 undulator**

# 6 T Superconducting Wave Length Shifter

