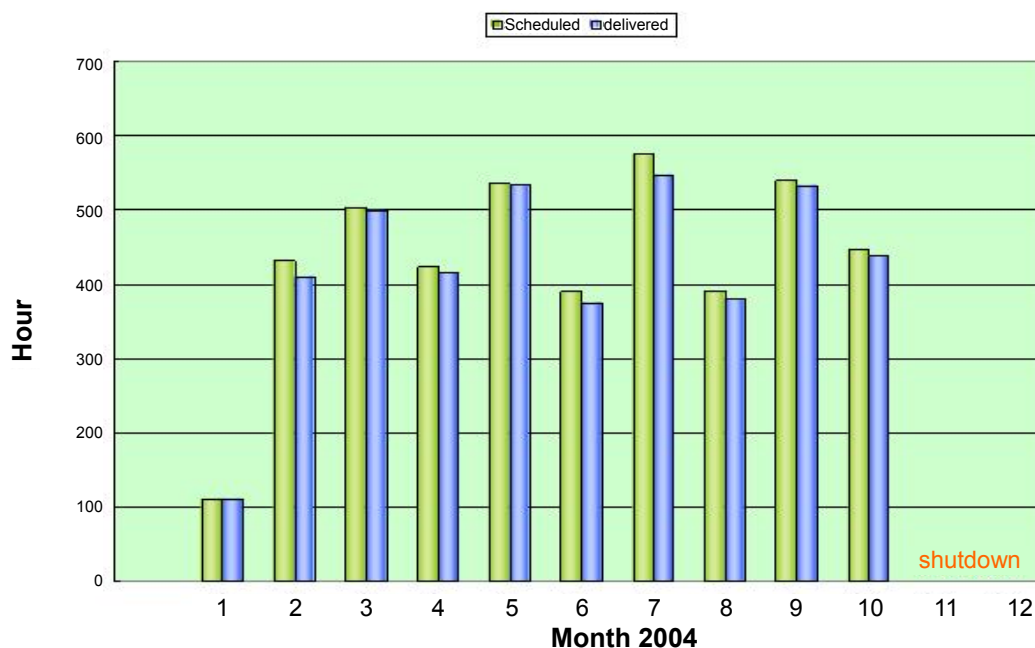


Machine Operation

- Energy : 1.5 GeV
- Current : 200 mA
- Lifetime : 6 hr@200 mA, SWLS @ 5.0 Tesla, SW6 @ 3.2 Tesla.
- Orbit stability : ~ 1 μm
- Orbit drift : < 5 μm / 6 hr
- Photon stability : better than 0.1% for 82% of user beam time
- Operation : weekday : 08:00 – 24:00 user time, 00:00 – 08:00 machine study
weekend : 00:00 – 24:00 user time
- Up-time : > 97%

The regular one-week accelerator maintenance was scheduled once every two months in 2004 and the storage ring was shut down during November and December 2004 for installing and commissioning superconducting RF-cavity. About 73% of available machine time was allocated for user operation in 2004. The light source up-time for user operation is about 97% with both SWLS and SW6 in full operation on all shifts.



Statistics of the Machine Up-time