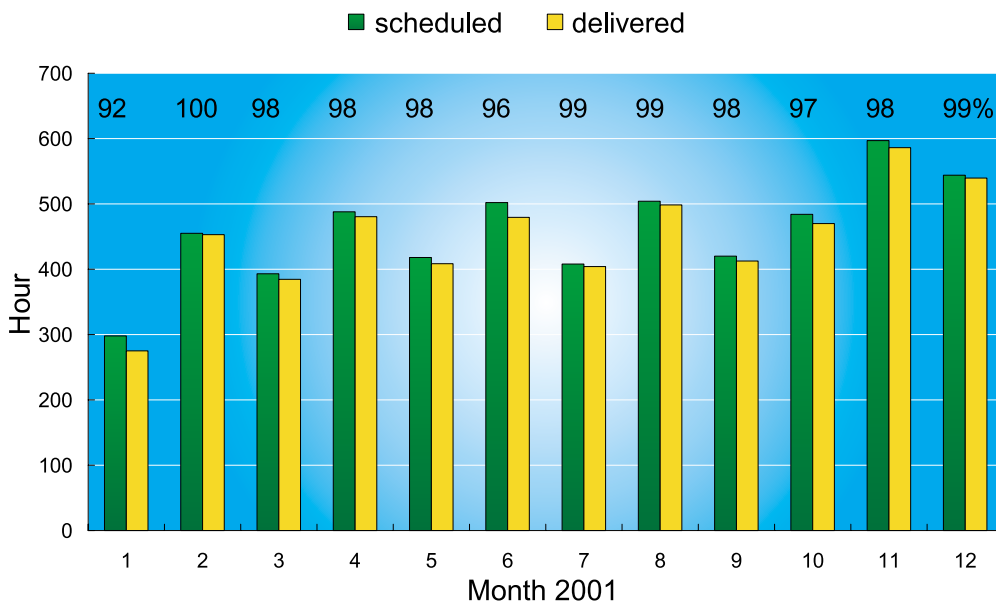


Machine Operation

- **Energy:** 1.51 GeV
- **Current:** 200 mA
- **Lifetime:** 8hr @ $\sigma_v=80 \mu\text{m}$, 15hr @ $\sigma_v=150 \mu\text{m}$
- **Stability:** $\sim 1 \mu\text{m}$
- **Drift:** $< 10 \mu\text{m}/8 \text{hr}$
- **Operation:** 8:00 ~ 24:00 user time, 0:00 ~ 8:00 machine study
- **Up-time:** $\sim 97\%$

The regular one-week accelerator maintenance is scheduled once every two months in 2001. The light source up-time for users is about 97%.



Machine up-time of user shifts in 2001.